

SARAH ATLEE



A Painter Who Quilts

sarahatlee.com

sarah@sarahatlee.com

facebook.com/sarahatleemakesart

instagram.com/sarahatlee

pinterest.com/sarahmakespics

linkedin.com/in/sarah-atlee-makes-art

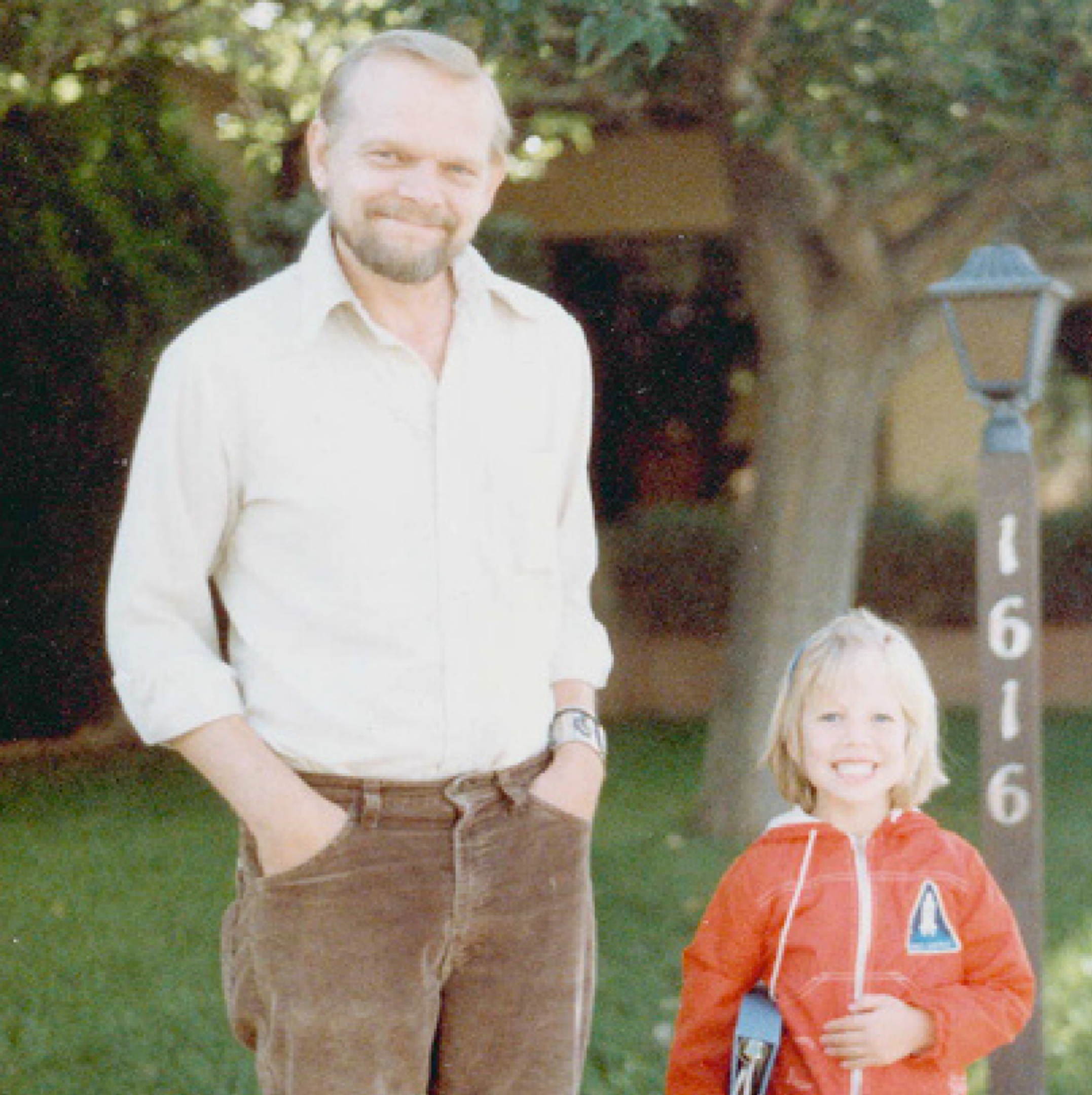


SARAH ATLEE

- How I Got From Painting to Quilting
- Myths About Quilting
- Q&A
- Improv Patchwork Demo



Sarah Atlee / sarahatlee.com

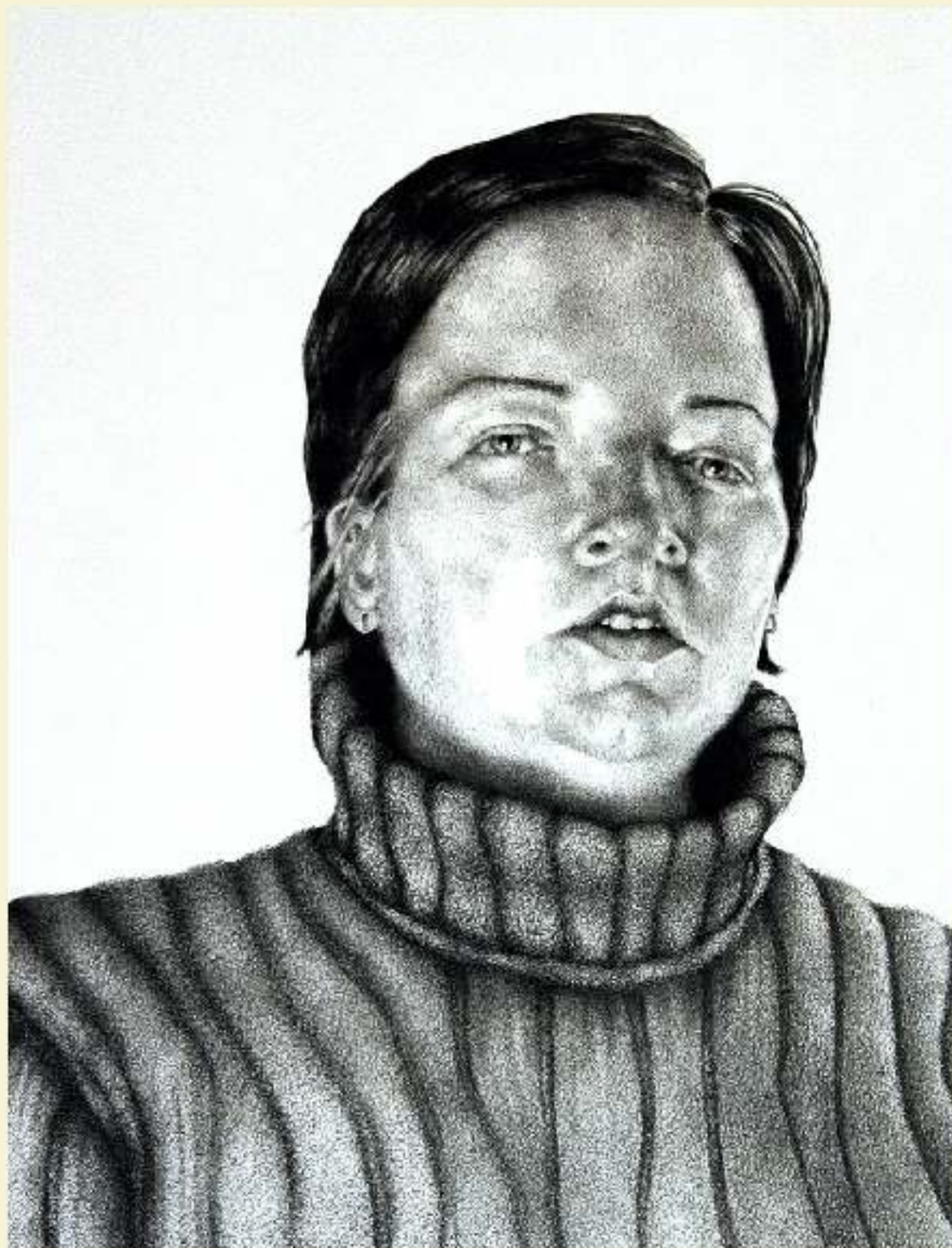


BIO

Stuff That Happened After I Was Born

- 1980 Born in Norman, OK
- 1981–2001 Albuquerque, NM
- 1997 First art sale
- 2001 University of New Mexico BFA
- 2003–2006 Rochester, NY
- 2006 Rochester Institute of Technology MFA
- 2006 Back to Norman, OK
- 2008–13 OKC
- 2013–16 Austin, TX
- 2016–present OKC
- 2018–present Journey Quilt Co.

Sarah Atlee / sarahatlee.com



romy, ink on paper, 2009

How I Got
From This



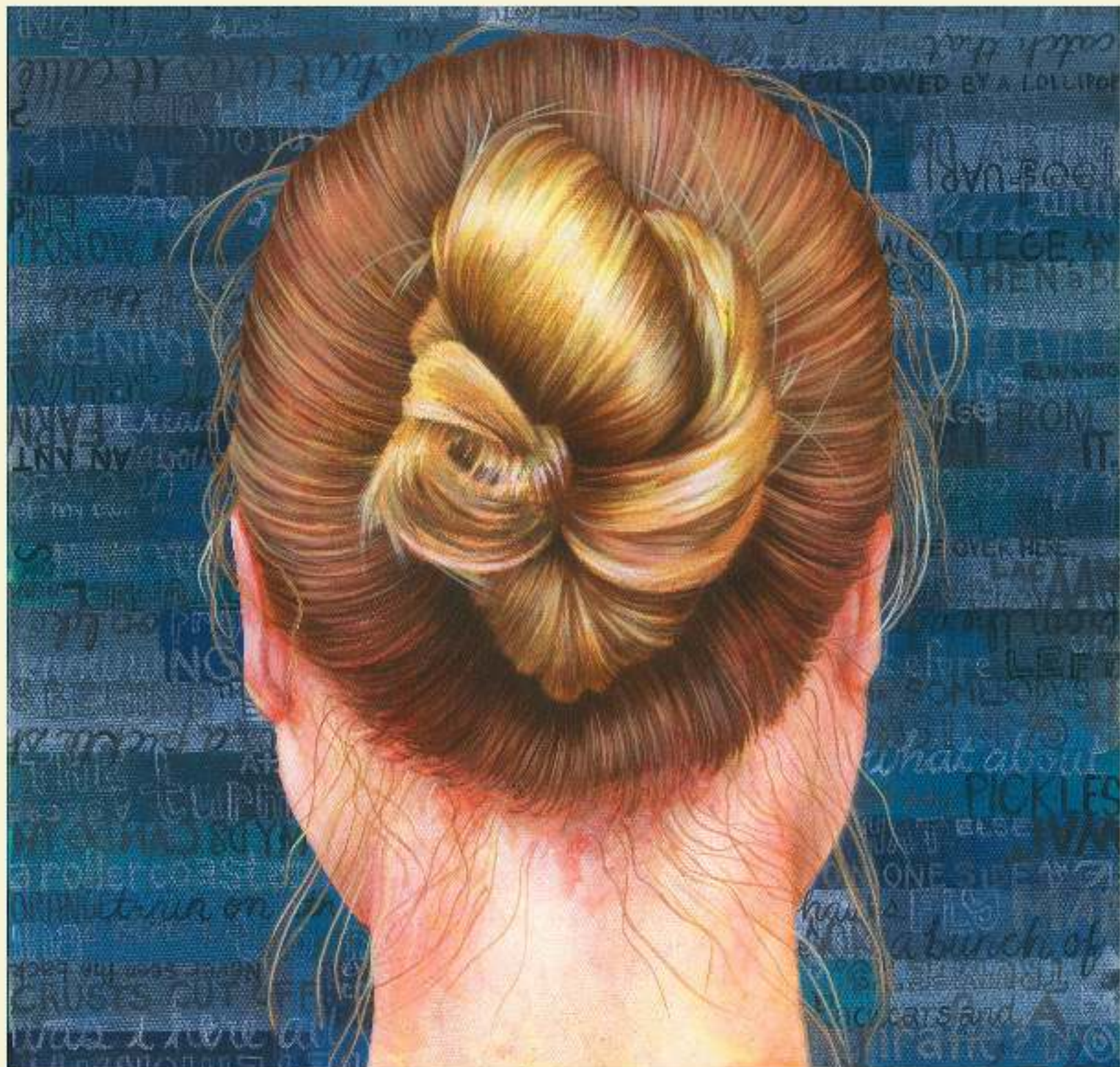
To This



And The Other, quilt, 2018

Sarah Atlee / sarahatlee.com





2009



2011

Sarah Atlee / sarahatlee.com

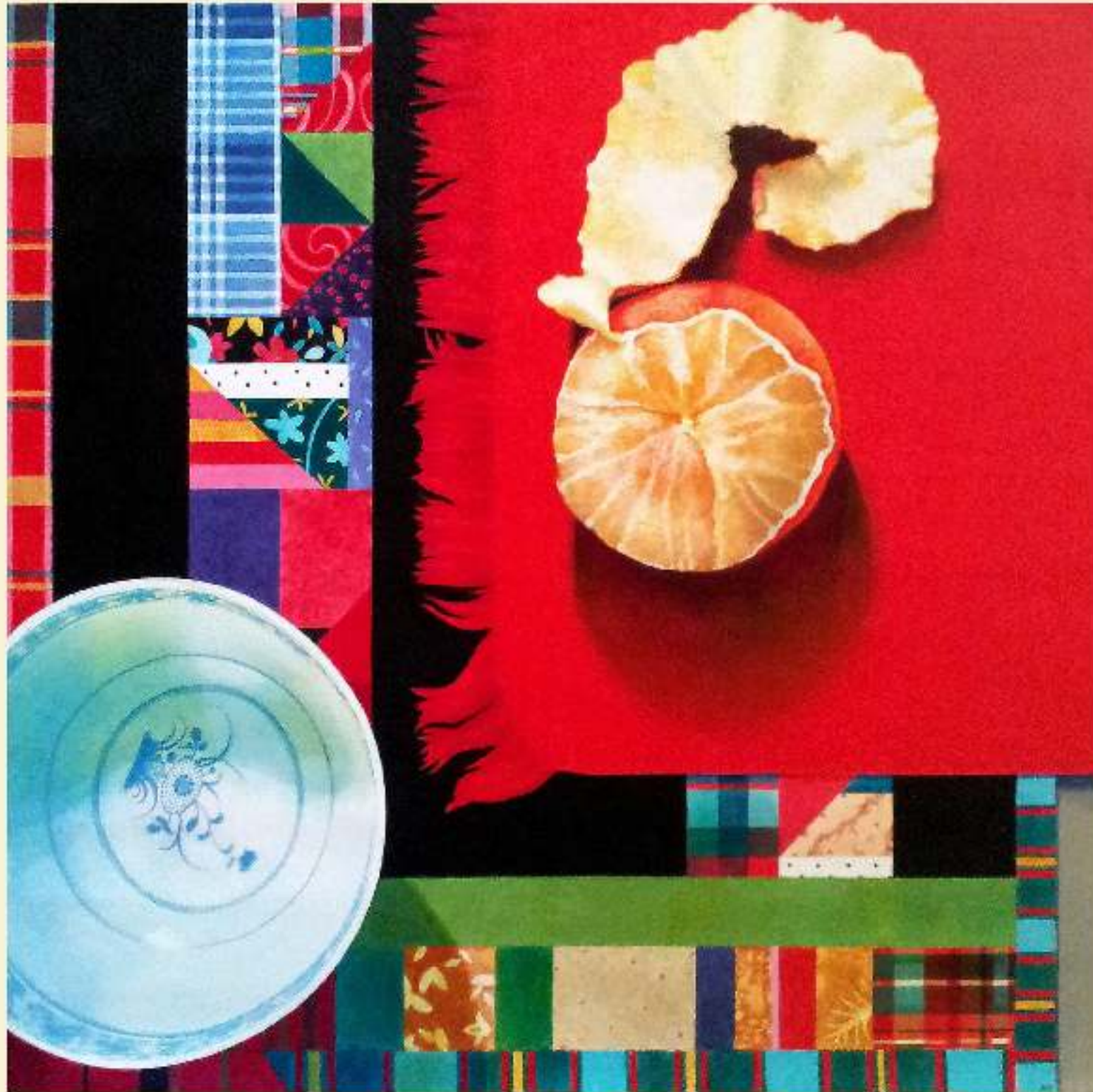


2011



2012

Sarah Atlee / sarahatlee.com



2013



2014

Sarah Atlee / sarahatlee.com

**WHADDYA MEAN
"MODERN"
QUILTING?**



**The Modern Quilt Guild
&
QuiltCon**



The Improv Handbook for Modern Quilters
Sherri Lynn Wood



2015

Sarah Atlee / sarahatlee.com

WHADDYA MEAN "IMPROV" QUILTING?



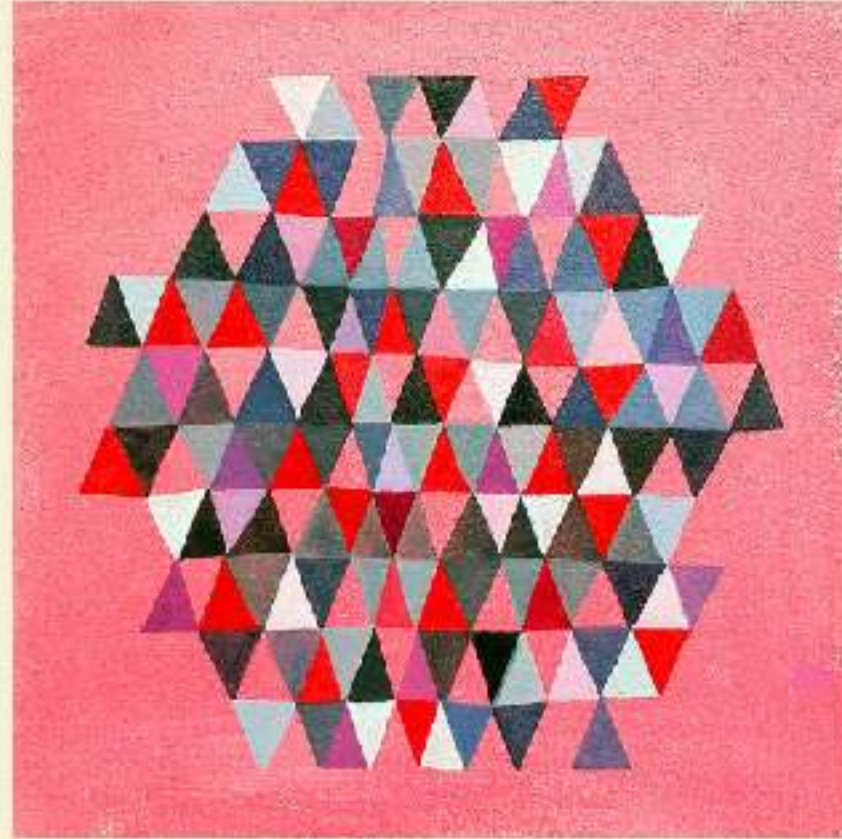
- no pattern
- no plan
- no measurements
- no pinning
- no ruler
- *no stress*



Lucy Mingo
Sherri Lynn Wood
Maria Shell
Julian Jamaal Jones
Joe Cunningham
#improvquilting



Sarah Atlee / sarahatlee.com



2015-16

Sarah Atlee / sarahatlee.com

A FUNNY THING HAPPENED...



painting



quilting

WHY I FELL IN LOVE WITH QUILTS

- Learning new skills
- Treasure hunts for fabric (thrifting)
- Convincing weird things to work together
- Using existing colors & textures
- Quilts are functional
 - Engage multiple senses
 - Experienced with the body
 - Washable
- Quilts are Magical
 - Vessels for the human experience
 - Telling our stories
 - Saying I Love You



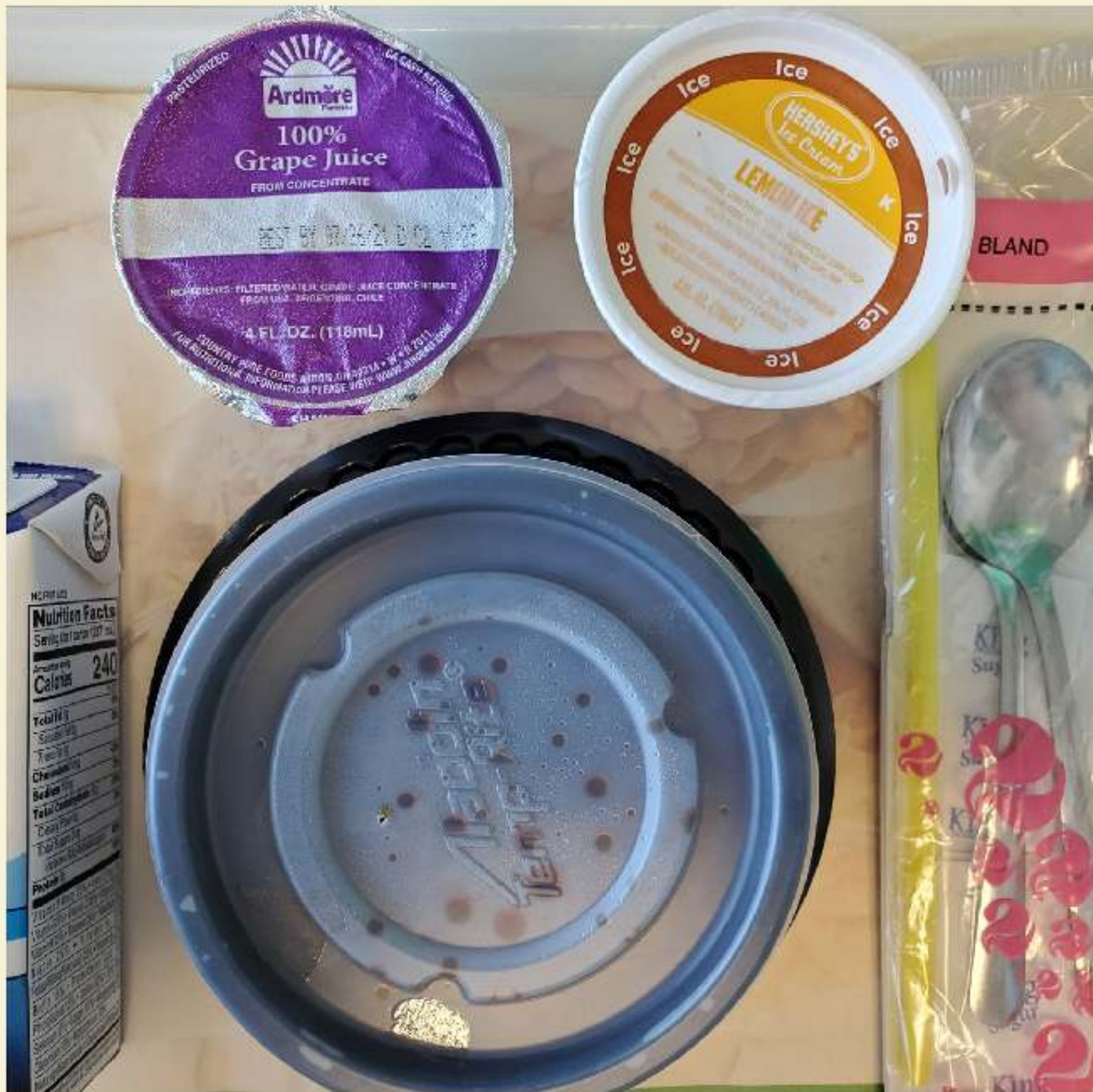


RESIDENCIES

i.e. Art Camp

- 2017 [Artspace] at Untitled, OKC
- 2017 Current Studio, OKC
- 2017 Jentel Arts Foundation, Wyoming
- 2018 OxBow School of Art, Michigan
- 2019 KHN Center For the Arts, Nebraska

Sarah Atlee / sarahatlee.com



Sarah Atlee / sarahatlee.com



TIPS FOR LIVING WITH CHRONIC ILLNESS

- Know that you are **not alone**
- **Listen** to your body
- Read **ChronicBabe 101** by Jenni Grover

Sarah Atlee / sarahatlee.com

MYTHS ABOUT QUILTING



"Quilting is a dying art."

- In the United States and Canada 85 million creatives account for **\$35 billion in sales.**
- The quilting industry anticipates approaching **\$5 billion by 2026-27**, indicating stable and solid growth.

Source: 2022 Quilters' Survey from [Premier Needle Arts](#)

The Modern Quilt Guild Jan 2021 – June 2022

- Over **17,000** member groups
- Local Guild Memberships \$185,055
- Individual Memberships \$176,667

Source: 2022 MQG Annual Report

Sarah Atlee / sarahatlee.com

Q: WHY ARE QUILTERS LIKE COCKROACHES?

- They practice skills necessary to survive the apocalypse
- Accustomed to repeated stabbing; basically unkillable
- For every one you see, there's a hundred more in the walls
- All of the above



MYTHS ABOUT QUILTING



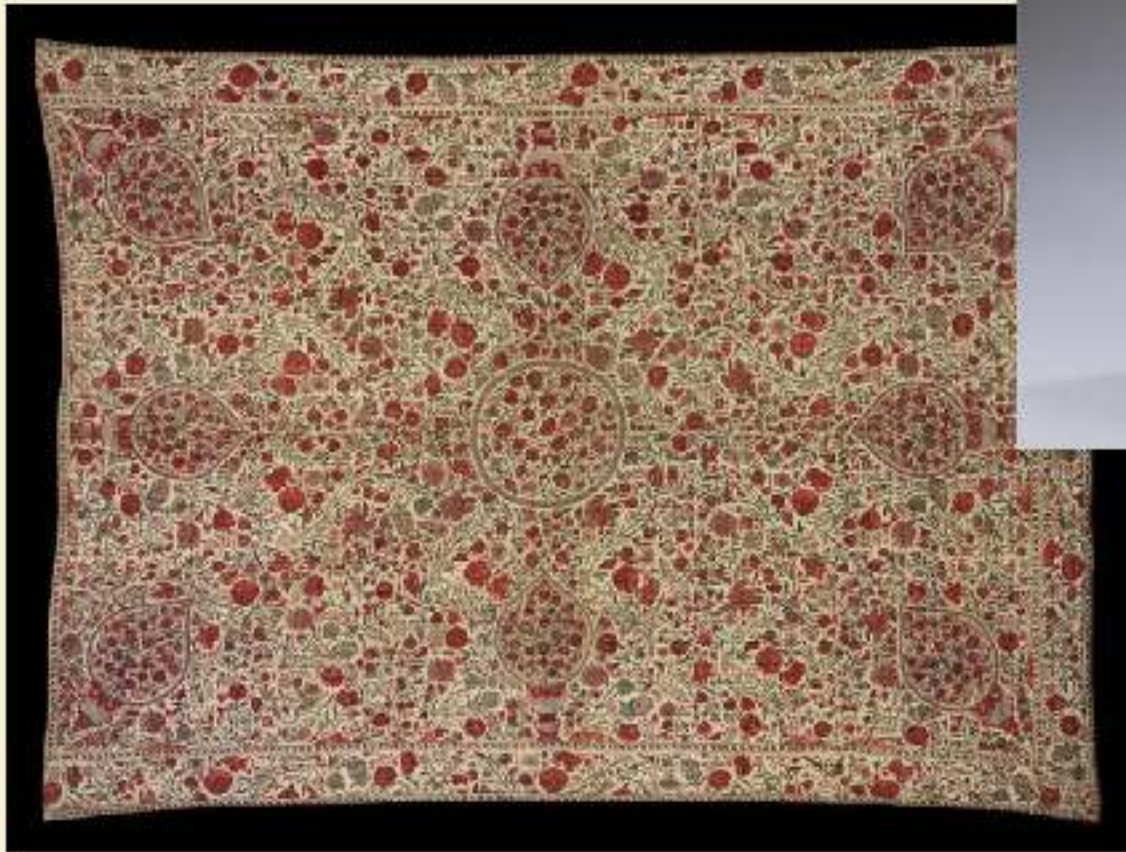
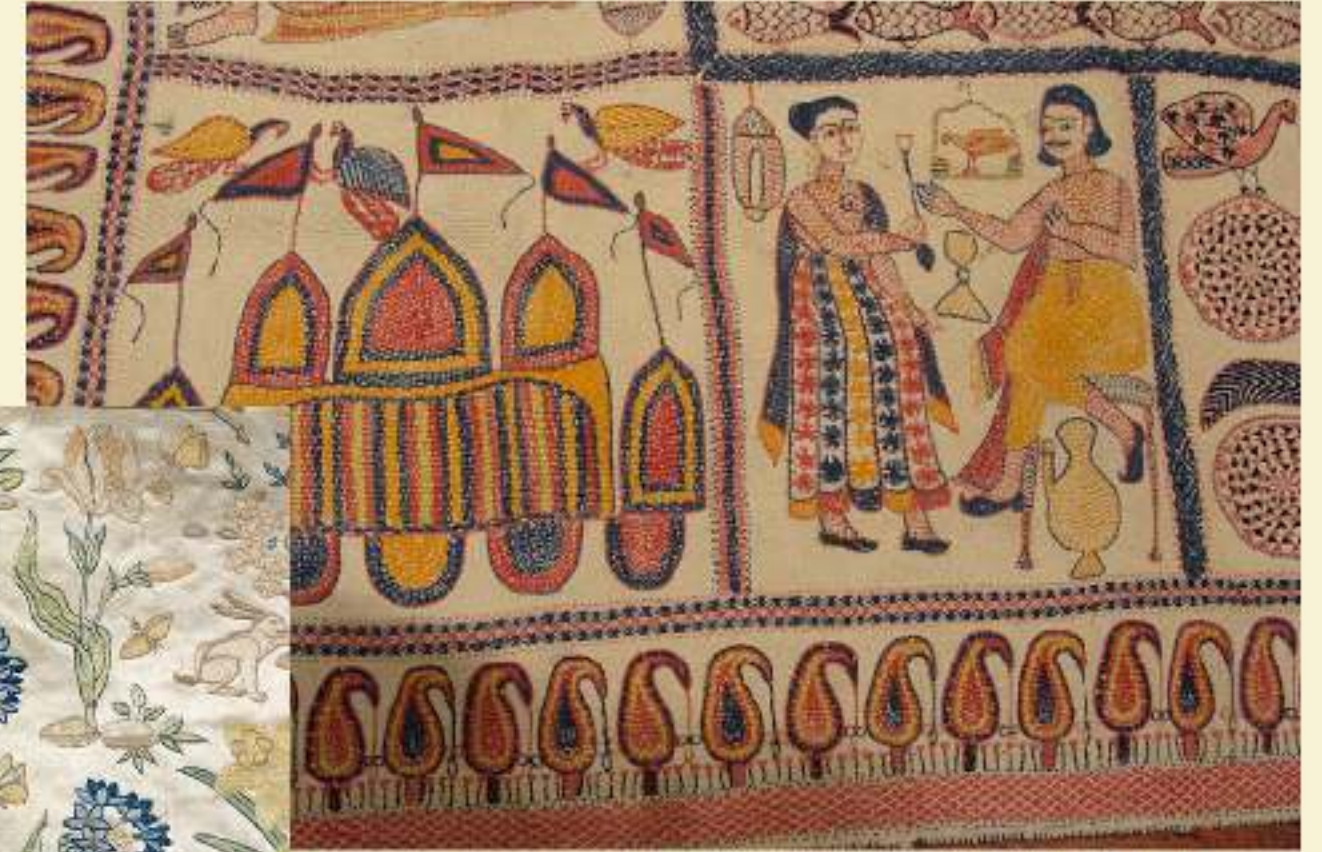
"Quilting is womens' work."

MYTHS ABOUT QUILTING



"Quilting is an American art form."

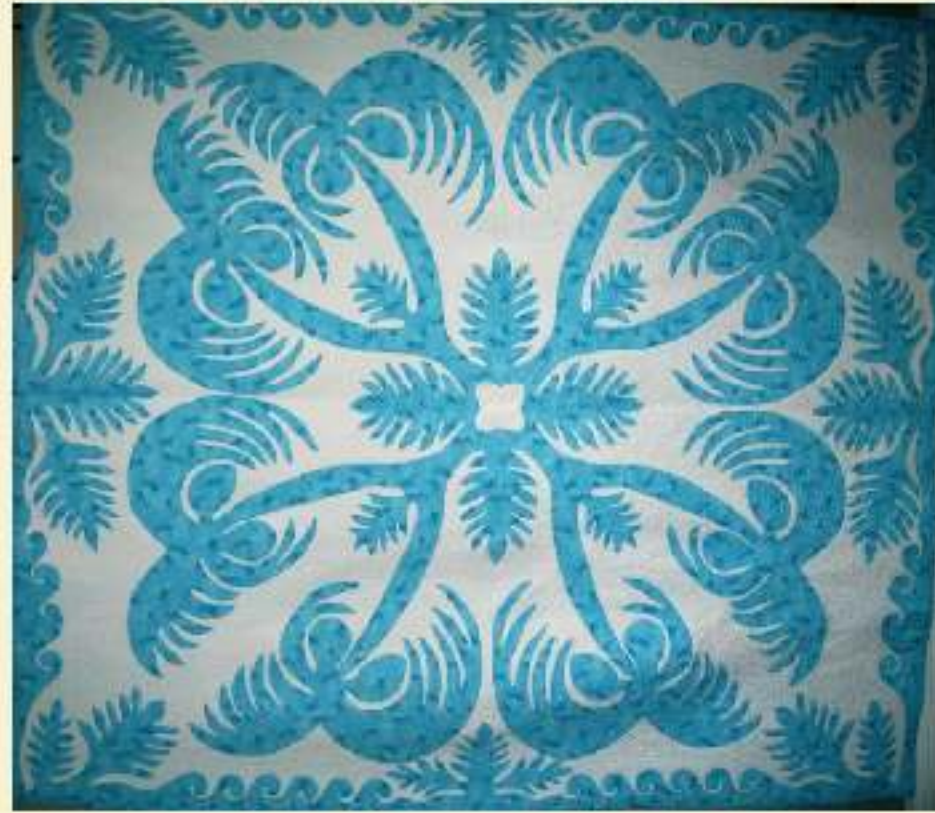
India



Hmong



Hawaii



Sicily late 14C



Sudan



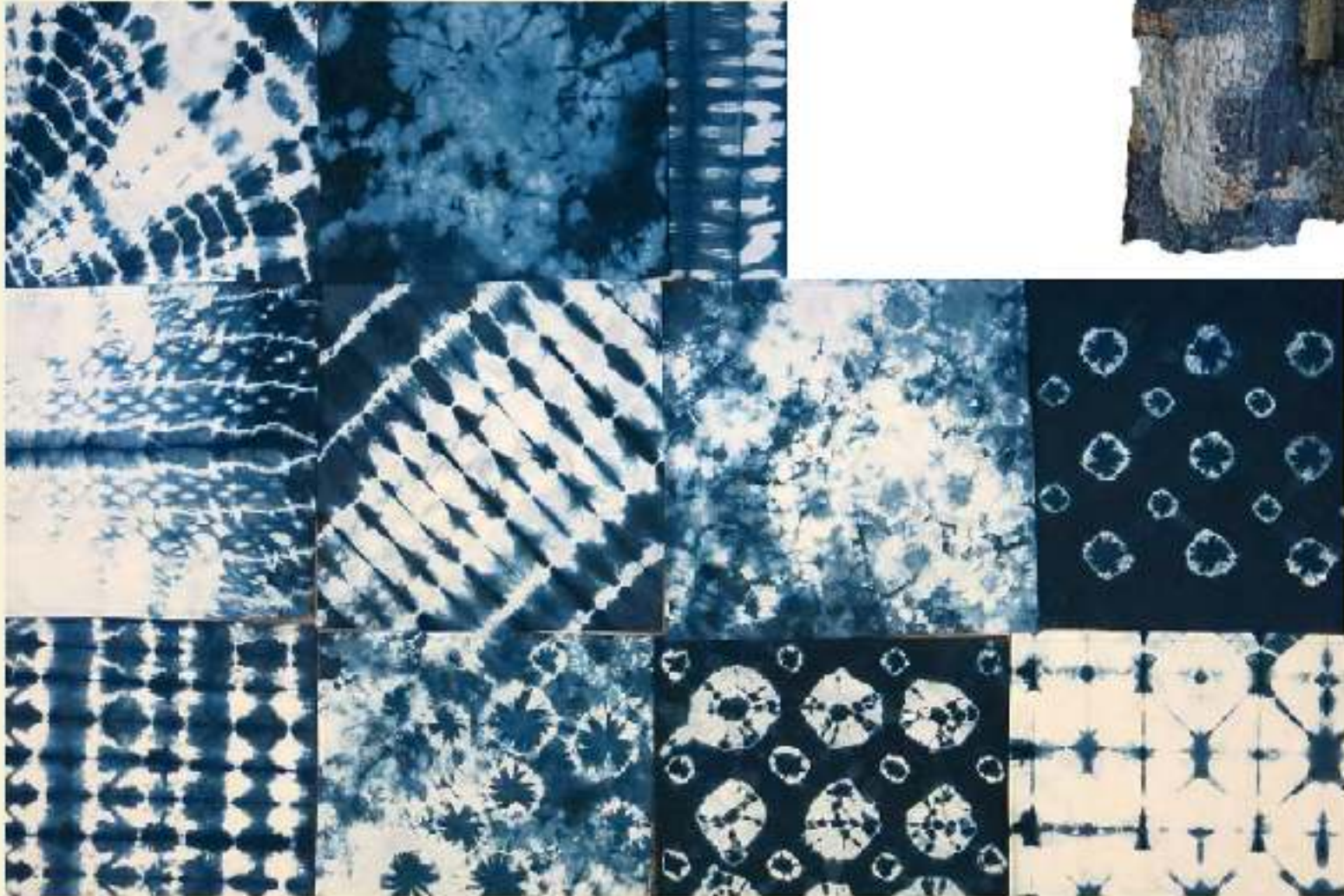
Peru



China

Japan

Shibori



Boro

Sashiko



MYTHS ABOUT (IMPROV) QUILTING



"Improv... So, like, random?"

A SUPER QUICK WORD ABOUT T-SHIRTS



Journey Quilt Company

16516 N Penn (in Fenwick Plaza)

Edmond OK 73102

Monday – Friday 10–5

405 340 0444

JourneyQuilts.com

Let's stay in touch.

—
Sign up for The Fold at sarahatlee.com

sarah@sarahatlee.com

facebook.com/sarahatleemakesart

instagram.com/sarahatlee

pinterest.com/sarahmakespics

linkedin.com/in/sarah-atlee-makes-art

